

Prostate Cancer and Asbestos: A Systematic Review and Meta-Analysis

Frédéric Dutheil, MD, PhD^{1,2}; Laetitia Zaragoza-Civale, MD³; Bruno Pereira, PhD⁴; Martial Mermillod, PhD^{5,6}; Julien S Baker, PhD⁷; Jeannot Schmidt, MD⁸; Fares Moustafa, MD, PhD⁹; Valentin Navel, MD¹⁰

Perm J 2020;24:19.086

E-pub: 02/14/2020

<https://doi.org/10.7812/TPP/19.086>

ABSTRACT

Introduction: Asbestos-related diseases and cancers represent a major public health concern.

Objective: To conduct a systematic review and meta-analysis to demonstrate that asbestos exposure increases the risk of prostate cancer.

Methods: The PubMed, Cochrane Library, Embase, and ScienceDirect databases were searched using the keywords (*prostate cancer* OR *prostatic neoplasm*) AND (*asbestos** OR *crocidolite** OR *chrysotile** OR *amphibole** OR *amosite**). To be included, articles needed to describe our primary outcome: Risk of prostate cancer after any asbestos exposure.

Results: We included 33 studies with 15,687 cases of prostate cancer among 723,566 individuals. Asbestos exposure increased the risk of prostate cancer (effect size = 1.10, 95% confidence interval [CI] = 1.05-1.15). When we considered mode of absorption, respiratory inhalation increased the risk of prostate cancer (1.10, 95% CI = 1.05-1.14). Both environmental and occupational exposure increased the risk of prostate cancer (1.25, 95% CI = 1.01-1.48; and 1.07, 1.04-1.10, respectively). For type of fibers, the amosite group had an increased risk of prostate cancer (1.12, 95% CI = 1.05-1.19), and there were no significant results for the chrysotile/crocidolite group. The risk was higher in Europe (1.12, 95% CI = 1.05-1.19), without significant results in other continents.

Discussion: Asbestos exposure seems to increase prostate cancer risk. The main mechanism of absorption was respiratory. Both environmental and occupational asbestos exposure were linked to increased risk of prostate cancer.

Conclusion: Patients who were exposed to asbestos should possibly be encouraged to complete more frequent prostate cancer screening.

INTRODUCTION

Asbestos is a major occupational risk factor for workers, because it causes various asbestos-related cancers such as lung, laryngeal, and ovarian cancers, and pleural and peritoneal mesothelioma.¹ However, the influence of asbestos exposure on the risk of prostate cancer is still under debate.^{2,3} Prostate cancer is the most frequent cancer in men in France⁴ and the second most common in the world⁵; therefore, the influence of asbestos exposure on prostate cancer is a public health issue. Most studies demonstrate an increased risk of asbestos-related diseases owing to respiratory exposure.^{6,7} Regarding oral ingestion of asbestos, animal studies have failed to demonstrate an increased risk,⁸ whereas results of human studies suggest an increased risk of some cancers after drinking asbestos-contaminated water.^{9,10} For prostate cancer, some studies demonstrated a particular risk

both after respiratory^{11,12} and oral ingestion of specific agents,¹³⁻¹⁵ but comparisons between modes of absorption of asbestos on the risk of prostate cancer were never investigated. Last, even in countries prohibiting asbestos, asbestos remains widespread at workplaces and in public spaces. For example, some studies stated that nonoccupational exposure is the main cause of some asbestos-related cancers.¹⁶ Therefore, the influence of the type of asbestos exposure (occupational or environmental) on prostate cancer also needs to be further investigated.

In view of these elements, we conducted a systematic review and meta-analysis to evaluate whether asbestos exposure increases the risk of prostate cancer. Secondary objectives were to evaluate the influence of the mode of absorption (respiratory or oral ingestion), the type of exposure (occupational or environmental), and other factors such as occupational role,¹⁷ use of personal protective equipment,¹⁸ quantification of asbestos exposure,⁷ type of asbestos fibers,¹⁹ or country.^{20,21}

METHODS

Literature Search

We reviewed all published studies involving asbestos exposure, professional or not, and prostate cancer incidence and/or mortality. The inclusion criterion for the search strategy was asbestos exposure. For the literature search, we used the following keywords: (*prostate cancer* OR *prostatic neoplasm*) AND (*asbestos** OR *crocidolite** OR *chrysotile** OR *amphibole** OR *amosite**). The following databases were searched on September 1, 2019: PubMed,

Author Affiliations

- ¹ Physiological and Psychosocial Stress, Université Clermont Auvergne, CNRS, LaPSCo, CHU Clermont-Ferrand, University Hospital of Clermont-Ferrand, Occupational and Preventive Medicine, WittyFit, France
- ² Faculty of Health, School of Exercise Science, Australian Catholic University, Melbourne, Victoria
- ³ Occupational and Preventive Medicine, CHU Clermont-Ferrand, University Hospital of Clermont-Ferrand, France
- ⁴ Biostatistics Unit, the Clinical Research and Innovation Direction, CHU Clermont-Ferrand, University Hospital of Clermont-Ferrand, France
- ⁵ Université Grenoble Alpes, Université, Savoie Mont Blanc, CNRS, LPNC, Grenoble
- ⁶ Institut Universitaire de France, Paris
- ⁷ Department of Sport, Physical Education, and Health, Centre for Health and Exercise Science Research, Hong Kong Baptist University, Kowloon Tong
- ⁸ Physiological and Psychosocial Stress, Université Clermont Auvergne, CNRS, LaPSCo, CHU Clermont-Ferrand, Emergency Medicine, University Hospital of Clermont-Ferrand, France
- ⁹ Emergency Medicine, Université Clermont Auvergne, CHU Clermont-Ferrand, University Hospital of Clermont-Ferrand, France
- ¹⁰ Ophthalmology, Université Clermont Auvergne, CHU Clermont-Ferrand, University Hospital of Clermont-Ferrand, France

Corresponding Author

Frédéric Dutheil, MD, PhD (frederic.dutheil@uca.fr)

Keywords: amosite, asbestos, chrysotile, crocidolite, environmental asbestos exposure, occupational asbestos exposure, prostate cancer, work asbestos exposure

Cochrane Library, ScienceDirect, and Embase. The search was not limited to specific years, and no language restrictions applied. To be included, articles needed to describe our primary outcome: Risk of prostate cancer after asbestos exposure. More specifically, we included all articles with data on incidence of, or mortality from, prostate cancer, or articles with crude data allowing such calculation. In addition, reference lists of all publications meeting the inclusion criteria were manually searched to identify any further studies not found through electronic searching. The search strategy is described in Figure 1.

Four authors (LZ-C, VN, FD, and MM) separately conducted all literature searches, collated and reviewed the abstracts, and, on the basis of the selection criteria, decided the suitability of the articles for inclusion. A fifth author (BP) was asked to review the articles when consensus on suitability was debated. Then all authors reviewed the eligible articles.

Quality of Assessment

Although not designed for quantifying the integrity of studies,²² the “STrengthening the Reporting of OBservational studies in Epidemiology” (STROBE) criteria were used for checking the quality of reporting.²³ The 22 items identified in the STROBE criteria were evaluated for a maximal score of 34 for each study. The methodologic quality of the studies was further evaluated by 3 authors (LZ-C, VN, and FD) using the Newcastle-Ottawa Quality Assessment Scale model.²⁴ The following 9 items were assessed in all cohort studies: 4 items on selection bias (representativeness of the exposed, selection of the nonexposed cohort, ascertainment of exposed, outcome of interest was not present at start), 2 items on comparability bias (design and analysis), and 3 items on outcome bias (assessment of outcome, longer follow-up, and adequacy of follow-up). Similar items were used to evaluate case-control studies. Each item was assigned a judgment of “yes,” “no,” “cannot say,” or “not applicable.” Disagreements were addressed by obtaining a consensus with a third author (BP), shown in Figures 2 and 3.

Statistical Analysis

Statistical analysis was conducted using software (Stata version 13, StataCorp, College Station, TX).^{7,25-31} Characteristics of asbestos exposure, prostate cancer, individuals, or other variables were summarized for each study sample and reported as mean (standard deviation [SD]) and number (percent) for continuous and categorical variables, respectively. Heterogeneity in the study results was evaluated by examining forest plots, determining confidence intervals (CIs), and using formal tests for homogeneity based on the I^2 statistic, which is the most common metric for measuring the magnitude of between-study heterogeneity and is easily interpretable. The I^2 values range between 0% and 100% and are typically considered low for less than 25%, modest for 25% to 50%, and high for more than 50%. This statistical method generally assumes heterogeneity when the p value of the I^2 test is less than 0.05. For example, a significant heterogeneity may be caused by the variability between the characteristics of the studies, such as the mode of absorption of asbestos (respiratory or oral ingestion), the type

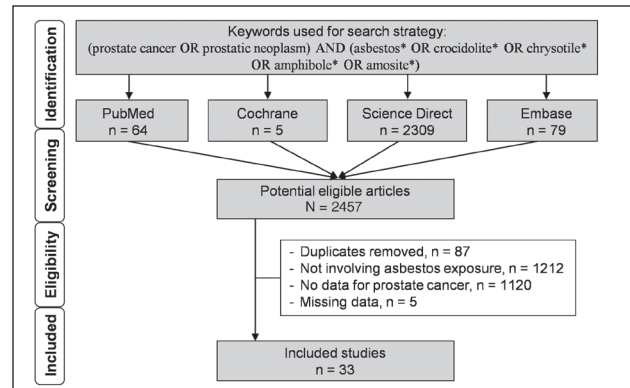


Figure 1. Search strategy.

of exposure (occupational or environmental), characteristics of individuals (age, sex, etc), or type of statistics retrieved in the included articles (odds ratio [OR], standardized incidence ratio [SIR], standardized mortality ratio [SMR], standardized rate ratio [SRR], and hazard ratio [HR]). Random-effects meta-analyses (DerSimonian and Laird approach) were conducted when data could be pooled.³² All p values less than 0.05 were considered statistically significant.

We conducted meta-analyses on the risk of prostate cancer after asbestos exposure. We stratified these meta-analyses on the mode of absorption of asbestos (respiratory or oral ingestion), the type of exposure (occupational or environmental), type of fibers (amosite and others, chrysotile/crocidolite and nonspecified), type of risk (SMR, SIR, SRR, and HR), and by continent (Europe, North America, Asia, and Oceania). When data were pooled, results were expressed as effect size (ES) of the risk of prostate cancer after asbestos exposure.³² An ES is defined as a unitless measure of the effects of asbestos exposure on the risk of prostate cancer centered at 1. An ES greater than 1 denoted an increased risk.³³ For thoroughness, funnel plots of these meta-analyses were used to search for potential publication bias.

To verify the strength of the results, we conducted further meta-analyses, excluding studies that were not evenly distributed around the base of the funnel.³⁴ We further performed a meta-analysis excluding studies with multiple exposures for sensitivity analysis. When possible (sufficient sample size), meta-regressions were proposed to study the relationship between the risk of prostate cancer after asbestos exposure and putatively to explain variables such as characteristics of the population (sex, age, etc),¹ working or environmental characteristics,⁷ or details on asbestos exposure. Results were expressed as regression coefficients and 95% CI.

RESULTS

An initial search produced 2457 articles (Figure 1). Removal of duplicates ($n = 87$) and application of selection criteria (1212 studies did not involve asbestos exposure, 1120 studies did not report data on prostate cancer, and 5 studies had missing data) reduced these articles to 33 studies.^{2,3,35-65} All identified articles were written in English.

Quality of Articles

Quality assessment of the 33 included studies, as outlined by the STROBE criteria, varied from 70.6^{44,49,55,64} to 97%,³⁷ with a mean (SD) score of 81.8 (7.94). Overall, the studies performed best for quality in their discussion section and worst in the methods section. With use of the Newcastle-Ottawa Quality Assessment Scale models, included studies varied from 67^{35,49} to 100%,⁶¹ with a mean (SD) score of 82.5 (8.79). Detailed characteristics of methodologic quality assessment of each included study are available in Figures 2 and 3.

	Selection bias			Comparability bias			Outcome bias		
	Representativeness of the exposed	Selection of the nonexposed	Ascertainment of exposed	Outcome of interest was not present at start	Study controls for the most important factor	Study controls for any important factor	Assessment of outcome	Follow-up long enough	Adequacy of follow-up
Amstrong 1988 [40]	+	NA	+	+	+	+	+	+	+
Berry 2000 [41]	+	+	+	+	+	?	+	+	+
Clemmesen 1981 [42]	+	NA	+	+	+	+	+	+	?
Enterline 1987 [43]	+	NA	+	-	+	+	+	+	+
Franklin 2012 [44]	+	NA	+	?	+	+	+	+	?
Howe 1989 [35]	+	NA	+	-	+	+	+	+	?
Hughes 1987 [45]	+	NA	+	?	+	+	+	+	+
Ilic 1996 [36]	+	+	-	-	+	+	+	+	+
Korda 2017 [37]	+	NA	+	+	+	+	+	+	+
Koskinen 2003 [38]	+	NA	-	+	+	+	-	+	+
Kovalevskiy 2016 [46]	+	+	+	+	+	?	+	+	+
Krstev 2007 [47]	+	NA	+	+	+	+	+	+	+
Meurman 1994 [48]	+	NA	+	+	+	+	+	+	+
Parent 2019 [49]	+	NA	+	-	+	+	+	+	?
Pesch 2010 [50]	+	NA	+	+	+	+	+	+	+
Pira 2007 [51]	+	NA	+	+	+	+	+	+	+
Pira 2009 [39]	+	NA	+	+	+	+	+	+	+
Pukkala 2014 [65]	+	NA	+	+	+	?	-	+	+
Puntoni 1979 [53]	+	NA	+	+	+	+	+	+	+
Puntoni 2001 [52]	+	NA	+	+	+	?	+	+	+
Raffn 1989 [54]	+	NA	+	+	+	+	+	+	+
Reid 2012 [2]	+	NA	+	+	+	-	+	+	+
Selikoff 1979 [55]	+	NA	+	-	+	+	+	+	+
Sorahan 2019 [56]	+	+	+	+	+	?	+	+	+
Szeszenia-Dabrowska 2002 [57]	+	NA	+	+	+	+	+	+	+
Tomioka 2011 [59]	+	NA	+	+	+	?	+	+	+
Tola 1988 [58]	+	NA	+	+	+	?	+	+	+
Tsai 1996 [60]	+	NA	+	+	+	+	+	+	+
Van den Borre 2015 [61]	+	+	+	+	+	+	+	+	+
Wang 2012 [62]	+	NA	+	+	+	?	+	+	+
Wilczyńska 2005 [63]	+	NA	+	+	+	+	+	+	+
Wu 2014 [3]	-	NA	+	+	+	+	+	+	+
Zhivin 2013 [64]	+	NA	+	+	+	+	+	+	+

Figure 2. Methodologic quality of included articles using Newcastle-Ottawa Quality Assessment Scale.^a

^a The articles by Reid² and Wang⁶² were published initially online in 2012 and in print in 2013.

+ = yes; - = no; ? = cannot say; NA = not applicable.

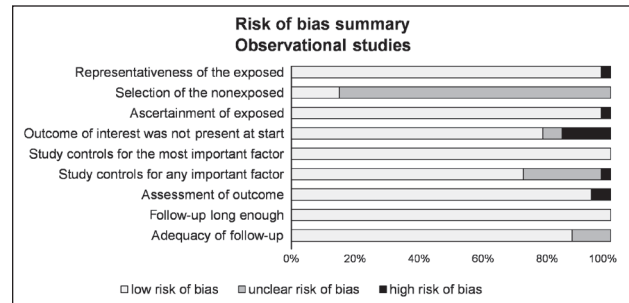


Figure 3. Risk of bias of included articles using Newcastle-Ottawa Quality Assessment Scale.

Inclusion Criteria for Asbestos Exposure

Asbestos exposure was the shared inclusion criterion of the 33 studies.^{2,3,35-65} Eligibility for asbestos exposure varied: asbestos in drinking water,³⁵ residential airborne exposure,^{2,37,44,49} and work exposure.³ Studies without estimation of duration^b or quantity^c of asbestos exposure were also included.

Population

Population sizes ranged from 101³⁶ to 1,033,869.³⁷ In total 1,282,066 individuals were included in this meta-analysis.

Regardless of whether age was expressed as a median or a mean value, only 7 studies^{2,36-38,44,50,57,62} reported age. The age of individuals ranged from 40 years⁶² to 70.5 years.³⁶ Fifteen studies included only men.^d A total of 723,566 men were included in this meta-analysis, ranging from 101³⁶ to 504,660.³⁷ Ten studies reported data on smoking^e; no studies reported on alcohol or gave adjusted results taking into account those parameters (Table 1, available online at: www.thepermanentejournal.org/files/2020/19.086Table1.pdf).

Asbestos Exposure

Mode of Absorption

A total of 32 studies concerned respiratory inhalation,^{2,3,36-65} and 1 study concerned oral ingestion from drinking asbestos-contaminated water³⁵ (Table 1, available online at: www.thepermanentejournal.org/files/2020/19.086Table1.pdf).

Type and Quantification of Exposure

Twenty-eight studies concerned work exposure,^{3,36,38-43,45-48,50-65} and 5 studies concerned environmental exposure.^{2,35,37,44,49} Seven studies were linked with an asbestos mine: 5 on miners (occupational exposure)^{39,40,46,48,51} and 2 on adults who had an environmental asbestos exposure during childhood by living near a crocidolite mine.^{2,44} The other studies on occupational asbestos exposure included shipbreaking and shipyards workers,^{3,38,47,52,53,58,59} workers from the construction industry and asbestos industry,^{38,45,50,51,54-57,60-64} and firefighters,⁶⁵ and occupation was unspecified in 1 study.³⁶ The 3 last studies with environmental exposure were on individuals exposed to drinking asbestos-contaminated water³⁵ and individuals with a residential exposure to asbestos insulation^{37,49} (Table 1, available online at: www.thepermanentejournal.org/files/2020/19.086Table1.pdf).

Twelve studies estimated asbestos exposure from measurements on-site.^f However, the method of estimation and units of estimation differed between studies: Number of fibers per milliliter of air per year,^{2,48,50,54,55,57,62} fiber-years,^{39,40} millions of fibers per liter of water,³⁵ and a unitless number categorizing asbestos exposure.^{3,51} Therefore, the heterogeneity of quantification of asbestos exposure precluded further analysis.

Type of Asbestos

Twenty-six studies reported type of asbestos: Amosite and others fibers in 15 studies,^g chrysotile/crocidolite in 12 studies,^h anthophyllite in 1 study,⁴⁸ and nonspecified in 7 studies.^{3,36,38,56,57,59,64} (Table 1, available online at: www.thepermanentejournal.org/files/2020/19.086Table1.pdf).

Country of Exposure

As shown in Table 1 (available online at: www.thepermanentejournal.org/files/2020/19.086Table1.pdf), a total of 18 studies were in Europe (Belgium,⁶¹ Denmark,^{42,54} Finland,^{38,48,58,65} France,⁶⁴ Germany,⁵⁰ Italy,^{39,51-53} Poland,^{57,63} Serbia,³⁶ and the UK^{41,56}), 4 studies were in Asia (China,^{3,62} Japan,⁵⁹ and Russia⁴⁶), 7 studies were in North America (Canada^{49,55} and US^{35,43,45,47,55,60}), and 4 studies were in Oceania (Australia^{2,37,40,4}).

Chronology or Duration of Exposure

The date of the beginning of exposure was retrieved in 18 studiesⁱ and ranged from 1920⁴⁵ to 1980.³⁷ However, duration of exposure was retrieved in only 2 studies as a mean³⁸ or a median.² Similarly, periods of exposure was retrieved in only 11 studies^j and covered a long period without further details: From 20 years (1946-1966)² to 45 years (1930-1975).³⁹ Therefore, meta-regressions were possible only on the basis of the date of beginning exposure.

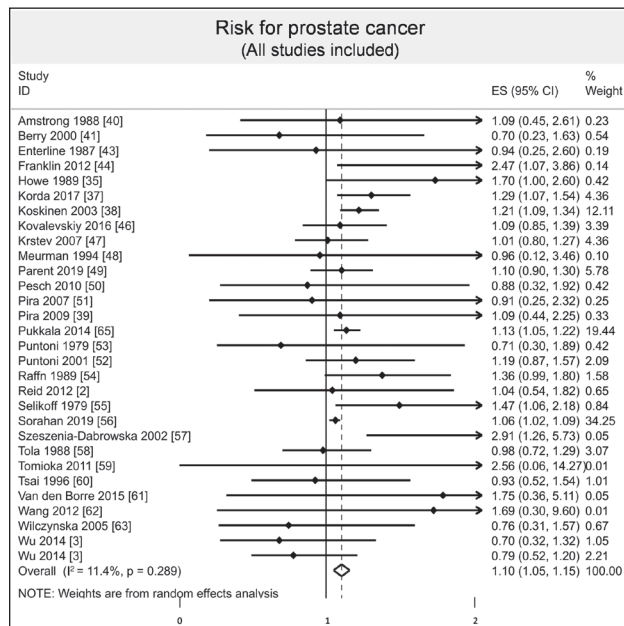


Figure 4. Meta-analysis of risk of prostate cancer after asbestos exposure.^a

^a Each horizontal black line represents the 95% confidence interval for the risk (represented by small solid diamond) of prostate cancer of each individual study. Open diamond represents overall risk (result of meta-analysis) considering all included studies. The articles by Reid² and Wang⁶² were published initially online in 2012 and in print in 2013. CI = confidence interval; ES = effect size; ID = identification.

Outcome and Aim of Studies

Nine studies shared similar outcomes: To evaluate the incidence of several cancers after any asbestos exposure.^{3,3,35,37,38,44,48,58,65} Twenty-four studies evaluated mortality from cancer, and 1 other evaluated both incidence and mortality from cancer after asbestos exposure.^k One study aimed to determinate risk factors for prostate cancer, inter alia, and specific occupational exposure as asbestos.³⁶

Study Designs and Other Exposure

Thirty-two studies described a cohort follow-up design, analysing incidence and/or mortality of all cancer in population exposed,^{2,3,35,37-65} and also giving results for prostate cancer. One was a case-control study of risk factors for prostate cancer, with 1 variable consisting of a broad category of occupational exposures

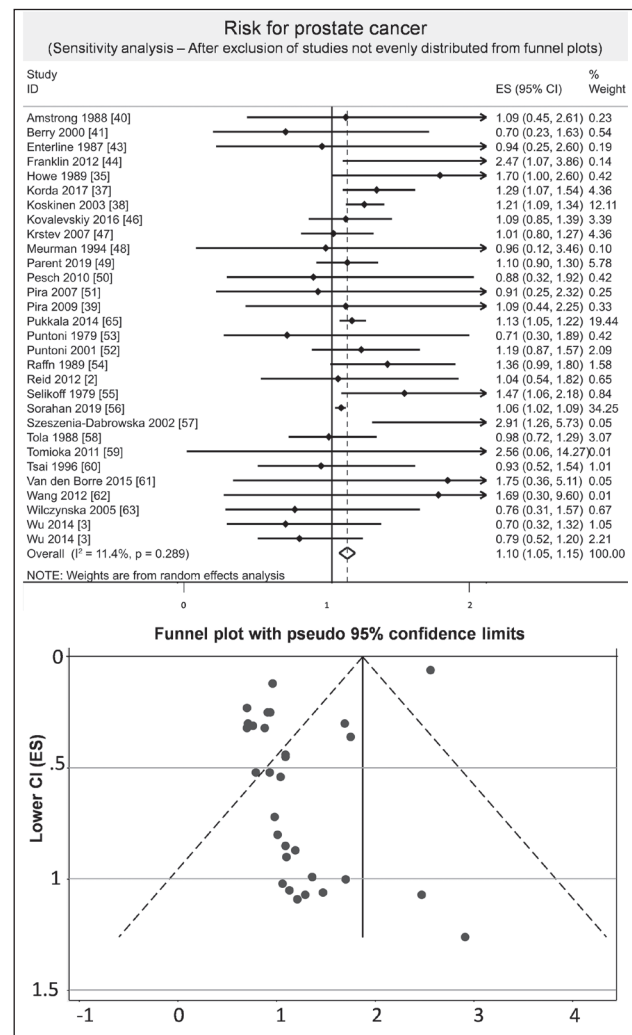


Figure 5. Sensitivity analysis of prostate cancer risk after exclusion of studies out of funnel plot.^a

^a Each horizontal black line represents the 95% confidence interval for the risk (represented by small solid diamond) of prostate cancer of each individual study. Open diamond represents overall risk (result of meta-analysis) considering all included studies. The articles by Reid² and Wang⁶² were published initially online in 2012 and in print in 2013. CI = confidence interval; ES = effect size; ID = identification.

without focusing only on asbestos.³⁶ Eighteen studies described an exposure to multiple agents without focusing only on asbestos exposure¹ (Table 1, available online at: www.thepermanentejournal.org/files/2020/19.086Table1.pdf).

Incidence of Prostate Cancer

Among 723,566 male participants, 15,687 cases of prostate cancer were diagnosed. Results were expressed with SIR in 9 studies,^{2,3,35,37,38,44,48,58,65} ranging from 0.70³ to 2.47⁴⁴; with SMR in 19 studies^m; with SRR in 1 study⁵⁶; and with HR in 1 study.³ Eight studies found an increased risk of prostate cancer,^{35,37,38,44,55-57,65} with a risk from 1.06 (95% CI = 1.02-1.09)⁵⁶ to 2.91 (95% CI = 1.26-5.73).⁵⁷ Twenty-five studies did not retrieve an increased risk of prostate cancer,^{2,3,36,38-43,45-54,58-63} with a non-significant risk from 0.70 (95% CI = 0.23-1.63)⁴¹ to 2.56 (95% CI = 0.06-14.27).⁵⁹

Meta-Analysis

We included 30 studies.^{2,3,35-41,43,44,46-63,65} The overall result of the meta-analysis including all the studies was that asbestos exposure could possibly increase the risk of prostate cancer (ES = 1.10, 95% CI = 1.05-1.15, I^2 = 11.4%; Figure 4). After exclusion of studies not evenly distributed from funnel plots, we found an overall risk of 1.12 (95% CI = 1.07-1.18, I^2 = 20.9%; Figure 5).

Stratified results by mode of absorption demonstrated an increased risk of prostate cancer by respiratory inhalation

(ES = 1.10, 95% CI = 1.05-1.15, I^2 = 7.90%), whereas there was no evidence of an increased risk of prostate cancer by oral ingestion (ES = 1.70, 95% CI = 0.90-2.50). Stratified results by type of exposure demonstrated that both environmental and occupational exposure slightly increased the risk of prostate cancer (ES = 1.25, 95% CI = 1.01-1.48, I^2 = 37.9%; and 1.07, 1.04-1.10, I^2 = 0.0%, respectively; Figure 6). Stratified results by type of fibers demonstrated an increased risk of prostate cancer with the amosite group (ES = 1.12, 95% CI = 1.05-1.19, I^2 = 0.0%), whereas there was no evidence of an increased risk with chrysotile/crocidolite and nonspecified groups (ES = 1.13, 95% CI = 0.98-1.28, I^2 = 0.0%; and 1.05, 0.90-1.21, I^2 = 60.3%, respectively; Figure 7). Stratification by continent demonstrated an increased risk of prostate cancer in Europe (ES = 1.12, 95% CI = 1.05-1.19, I^2 = 35.0%), whereas there was no evidence of an increased risk in North America, Asia, and Oceania (ES = 1.11, 95% CI = 0.94-1.28, I^2 = 17.1%; 1.09, 0.82-1.36, I^2 = 0.0%; and 1.28, 0.99-1.58, I^2 = 13.3%, respectively; Figure 8). Stratified results by type of risk demonstrated an increased risk of prostate cancer with SIR (ES = 1.16, 95% CI = 1.04-1.27, I^2 = 35.2%) and with SRR (ES = 1.06, 95% CI = 1.04-1.27), whereas there was no evidence of an increased risk with SMR and HR (ES = 1.09, 95% CI = 0.98-1.19, I^2 = 0.0%; and 0.79, 0.45 to 1.13, respectively).

We performed a sensitivity analysis by stratifying results and, after exclusion of studies out of the funnel plot, the

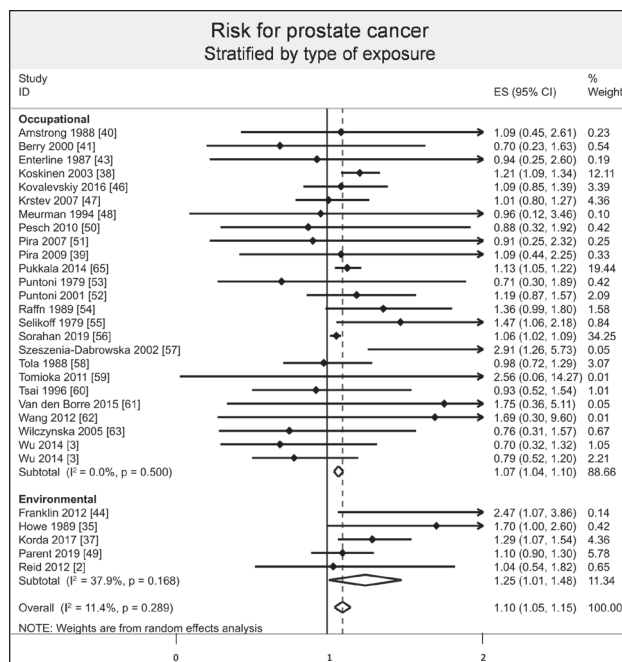


Figure 6. Risk of prostate cancer after asbestos exposure, stratified by type of exposure.^a

^a Each horizontal black line represents the 95% confidence interval for the risk (represented by small solid diamond) of prostate cancer of each individual study. Open diamond represents overall risk (result of meta-analysis) considering all included studies. The articles by Reid² and Wang⁶² were published initially online in 2012 and in print in 2013.

CI = confidence interval; ES = effect size; ID = identification.

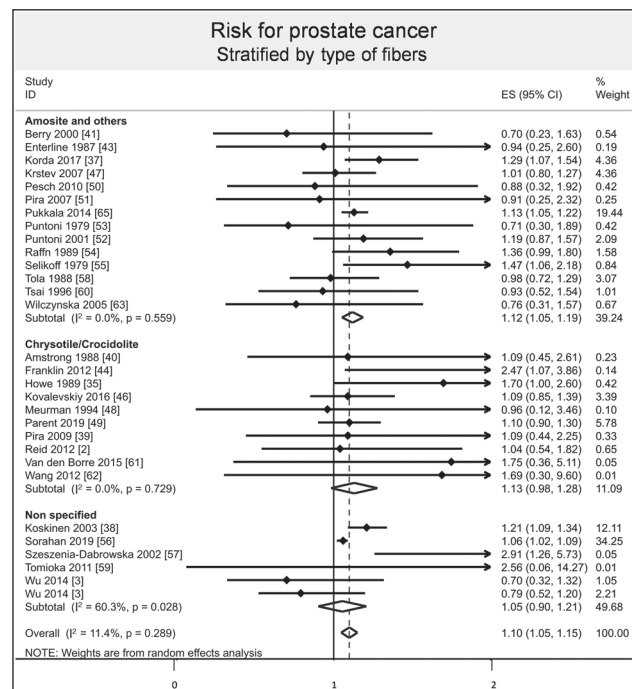


Figure 7. Risk of prostate cancer after asbestos exposure, stratified by type of fibers.^a

^a Each horizontal black line represents the 95% confidence interval for the risk (represented by small black diamond) of prostate cancer of each individual study. Blue diamond represents overall risk (result of meta-analysis) considering all included studies. The articles by Reid² and Wang⁶² were published initially online in 2012 and in print in 2013.

CI = confidence interval; ES = effect size; ID = identification.

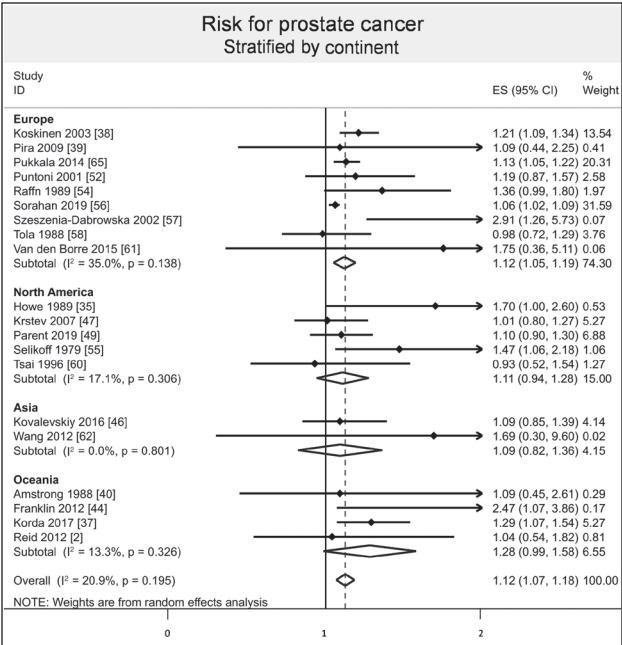


Figure 8. Risk of prostate cancer after asbestos exposure, stratified by continent.^a
^a Each horizontal black line represents the 95% confidence interval for the risk (represented by small solid diamond) of prostate cancer of each individual study. Open diamond represents overall risk (result of meta-analysis) considering all included studies. The articles by Reid² and Wang⁶² were published initially online in 2012 and in print in 2013.
CI = confidence interval; ES = effect size; ID = identification.

meta-analysis demonstrated similar results. We then conducted a meta-regression including sex, age, cohort size, lifestyle, toxic exposures, duration of follow-up, type of absorption, type of exposure, type of fibers, type of risk, and geographic zone. They did not influence the risk of prostate cancer (Figure 9). Insufficient data on quantity and during of exposure as well as use of personal protective equipment precluded further analysis.

DISCUSSION

The main finding of this study was that asbestos exposure could potentially lead to an increased risk of prostate cancer; however, prospective studies are warranted to confirm this finding. The main mode of asbestos absorption was respiratory, whereas oral ingestion was not found to be statistically significant. Both occupational and environmental exposures increased the risk of prostate cancer. We demonstrated that the risk remained prevalent in Europe and did not decrease over time.

Asbestos Exposure and Increased Risk of Prostate Cancer

In 2012, the International Agency for Research on Cancer of the World Health Organization classified all types of asbestos causing lung, laryngeal, and ovarian cancers, and pleural and peritoneal mesothelioma, and possibly other cancers and diseases.⁶ Our results suggest that asbestos exposure also may increase the risk of prostate cancer. Screening prostate cancer at an early stage is commonly done by the measurement of serum prostate-specific

antigen (PSA)⁶⁶; however, screening remains controversial because of overdiagnosis (up to 40%-50%) and adverse effects of over-treatment.⁶⁷⁻⁶⁹ Indeed, no country has yet introduced a national PSA-based screening program.⁷⁰ Two recent studies have contradictory results. Results of the European Randomized Study of Screening for Prostate Cancer show a relative reduction of mortality of 21% after 13 years of follow-up.⁷¹ In the US, the randomized Prostate, Lung, Colorectal and Ovarian screening trial concluded an absence of benefit on mortality.⁷² However, this US trial had a major bias, because nearly 90% of the control group had at least 1 PSA test. Even the US Preventive Services Task Force changed its recommendations, recommending that clinicians inform men aged 55 to 69 years about the potential benefits and harms of PSA-based screening for prostate cancer.⁷³ In France, several national recommendations propose measuring PSA and performing rectal examination after clear information about benefits and harms to patients age 50 to 75 years. The implication of the present study is that asbestos-exposed male workers older than age 50 years should be encouraged even more to engage in the screening.

Mode of Absorption

Our results showed that respiratory inhalation could increase the risk of prostate cancer, whereas there was no increased risk of oral ingestion of asbestos-contaminated water. The effects of oral ingestion of asbestos on the risk of other cancers are discordant between studies.⁷⁴ Whereas several studies did not reveal an excess cancer mortality after oral asbestos exposure,⁷⁵⁻⁷⁸ some studies demonstrated an increased risk of some cancers such as gastrointestinal⁹ or stomach cancer.¹⁰ The presence of fibers in organs such as the colon or gastrointestinal tract, kidney, spleen, and liver⁷⁹⁻⁸¹ is not necessarily linked to the development of a disease.⁸ However, the inhalation of asbestos undoubtedly has lung and pleural toxicity.⁸² The key mechanisms of carcinogenesis include oxidative stress, chronic inflammation, and genetic and

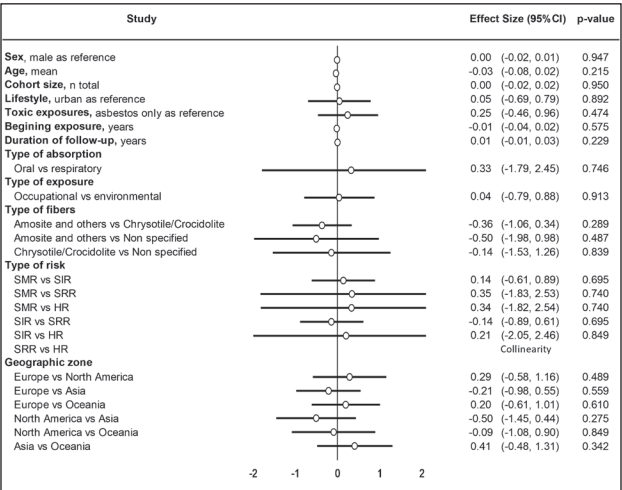


Figure 9. Meta-regression.
CI = confidence interval; HR = hazard ratio; SIR = standardized incidence ratio; SMR = standardized mortality ratio; SRR = standardized rate ratio.

epigenetic alterations as well as cellular toxicity and fibrosis.⁸³ The asbestos fibers can pass the alveolar barrier and reach the lung interstitium, activating several pathways in alveolar and interstitial macrophages and inducing the release of pro-inflammatory cytokines.⁸⁴ The fibers accumulate at the site of pleural drainage, passing into the pleural space, which results in chronic damage and inflammation of several cells.⁸⁵ Then the genotoxic initiation process and/or epigenetic mechanisms mediate the carcinogenic activity of asbestos.^{83,86} Asbestos fibers are phagocytosed by dividing cells and induce DNA breaks, leading to the presence of fiber-associated iron and reactive oxygen species.^{87,88} Asbestos has been found in the kidney, brain, and liver but not in the prostate,⁸⁹ but the translocation pathways for inhaled asbestos fibers are unclear. One hypothesis is that fibers, drained by the pulmonary lymphatic system, could reach the blood and then potentially translocate to all organs.⁹⁰ A population-based case-control study in 4 Nordic countries concluded that exposure to asbestos might be a risk factor for intrahepatic cholangiocarcinoma.⁹¹ For prostate cancer, the mechanism remains unknown.

Type of Exposure

In our study, both environmental and occupational exposures were risk factors for prostate cancer. The World Health Organization estimates that more than 100 million people could be exposed to asbestos in the workplace, resulting in more than 100,000 preventable deaths per year.²⁰ All forms of asbestos are now banned in 63 countries.⁹² However, a large number of countries still use, import, and export asbestos and asbestos-containing products,²¹ especially in some new industrial countries.^{20,21} Attempts to understand the implications of asbestos exposure are ongoing.^{93,94} Although the risk of occupational asbestos exposure is salient, environmental exposure is also a public health concern.⁶ In our study, the environmental exposures were by drinking contaminated water or by residential airborne contamination. However, asbestos is also present in geologic formations in several countries, in various forms: Crocidolite in southern Africa, tremolite in Cyprus and Corsica, and erionite in Turkey.⁹⁵ The International Agency for Research on Cancer classified erionite as a group 1 known human carcinogen and concluded that erionite is the cause of the malignant mesothelioma epidemic in Cappadocia, Turkey.^{96,97} Other cases of malignant mesothelioma have been reported after environmental exposure, in particular, in the family of asbestos workers.^{16,98-100} The risk of prostate cancer has never been studied in this population, to our knowledge, and further studies are warranted.

Limitations

There are limitations to this study. Meta-analyses inherit the limitations of the individual studies of which they are composed and therefore are subjected to the bias of included studies. Our meta-analyses included studies suffering from confounding bias that precluded our results. Moreover, the meta-analysis is based on a moderate number of studies; however, a previous meta-analysis with fewer studies contributed to effective preventive strategies in asbestos-exposed workers.⁷ Only 1 study reported an oral ingestion; therefore, stratified results for mode of absorption are inconclusive for oral absorption.³⁵ The difference in screening

procedures for prostate cancer between countries¹⁰¹ may have led to bias in the incidence of prostate cancer.

Surprisingly, studies in the European population demonstrated the greater risk without significant results for other continents, whereas it is known that health-related issues caused by asbestos exposure will be a public health problem in new industrial countries.^{102,103} This finding may be related to a lack of epidemiologic monitoring surveillance.¹⁰⁴

One study did not report sex in the total number of participants,³⁷ which can appear problematic in a meta-analysis for prostate cancer. However, this study gave risks of prostate cancer, and calculations in our meta-analysis did not require the number of individuals. Therefore, this study did not alter the quality of the results of the meta-analysis.

Another limitation is the absence of meta-regression based on quantification of asbestos exposure.¹⁰⁵ We included several studies^{2,3,35,39,40,48,62} that estimated exposure on the basis of the address of individuals or job characteristics. Even if such an approach is interesting, heterogeneity of reporting measures between studies precluded further analyses. The last recommendations on measurements of real exposure from the International Labour Organization are more than 30 years old (1986) and do not precisely limit value. Even if the present commonly used limit of 100,000 fibers for 1 cubic meter⁶ is applied, the recommendations need to be updated in accordance with evidence-based medicine.

Another limitation of our study is scarce information about type of fibers to which individuals were exposed. Indeed, asbestos fibers are divided in 2 groups: Serpentine fibers such as chrysotile and amphibole fibers with crocidolite and amosite, the most used in the past.¹⁰⁶ Their toxicity is associated with physicochemical properties of the material, such as length diameter and biopersistence.¹⁰⁷⁻¹⁰⁹ We demonstrated that amosite exposure increased the risk of prostate cancer the most; nonetheless, the amosite group also included chrysotile/crocidolite and the percentage of each type of fibers was not reported in the included studies. Thus, incomplete classification precluded robust conclusions on the specific effect of each type of fiber.

Another limitation is the existence of other sources of exposure in addition to asbestos in some included articles.⁹ However, there was no statistical influence of additional exposure on the risk of prostate cancer. Some articles also did not control for addictive behavior such as smoking and alcohol⁹; nevertheless, associations with prostate cancer incidence are unlikely but still a matter of debate.¹¹⁰⁻¹¹³

Some ecological studies^{2,35,37,44} in our meta-analysis determined an asbestos environmental exposure based on the patient's address at the time of the study and did not account for patients who migrated in or out of the area, thus potentially leading to a misclassification of exposure to asbestos. However, sensitivity analyses did not modify our findings (ES = 1.08; 95% CI = 1.05-1.10, I^2 = 0.0%). Finally, no studies gave details on the use of personal protective equipment.

CONCLUSION

Asbestos exposure seems to increase the risk of prostate cancer. Considering mode of absorption, the main mechanism was

respiratory, without significant results for oral asbestos ingestion. Both environmental and occupational asbestos exposure were linked with increased risk of prostate cancer. Insufficient data did not permit us to analyze the influence of age and the use of protective equipment. The findings of this study imply that people who were exposed to asbestos should possibly be encouraged to complete more frequent prostate cancer screening. ♦

^a References 3, 36, 38-43, 45-48, 50-65.

^b References 35, 36, 40, 41, 43, 44, 46, 49, 52, 53, 55, 57, 61, 64, 65.

^c References 36-38, 41-44, 46, 47, 49, 51-53, 56, 59-61, 63-65.

^d References 3, 36, 42, 45, 49-53, 55, 58-61, 65.

^e References 2, 36, 38, 42, 48, 50, 55, 59, 62, 63.

^f References 2, 3, 35, 39, 40, 48, 50, 51, 54, 55, 57, 62.

^g References 37, 41-43, 47, 50-55, 58, 60, 63, 65.

^h References 2, 35, 39, 40, 44-46, 49, 61, 62.

ⁱ References 2, 3, 35-38, 42, 45, 47, 48, 50, 51, 54, 56, 58-60, 62, 63.

^j References 2, 38, 43, 44, 47, 50, 57, 59, 60.

^k References 2, 38-43, 45-47, 49-57, 59-64.

^l References 2, 3, 36, 38, 42, 47, 48, 50, 52, 53, 55, 56, 58, 59, 62-65.

^m References 39-41, 43, 46, 47, 49-55, 57, 59-63.

ⁿ References 2, 3, 36, 38, 42, 47, 48, 50, 52, 53, 55, 56, 58, 59, 62-65.

^o References 2, 36, 38, 42, 48, 50, 55, 59, 62, 63.

Disclosure Statement

The author(s) have no conflicts of interest to disclose.

Acknowledgments

We express our sincere gratitude to the University Hospital of Clermont-Ferrand, France, which funded the study.

Kathleen Loudon, ESL, of Loudon Health Communications performed a primary copy edit.

Author Contributions

Frédéric Dutheil, MD, PhD, conceived, designed, and performed the experiments; analyzed the data; contributed reagents, materials, and analysis tools; helped write the article; and is responsible for integrity of the data analysis. Laetitia Zaragoza-Civale, MD, and Valentin Navel, MD, performed the experiments; analyzed the data; contributed reagents, materials, and analysis tools; helped write the article; and are responsible for integrity of the data analysis. Bruno Pereira, PhD, and Julien S Baker, PhD, analyzed the data and contributed reagents, materials, and analysis tools. Martial Mermillod, PhD; Jeannot Schmidt, MD; and Fares Moustafa, MD, PhD, helped write the article; participated in the literature review; and contributed reagents, materials, and analysis tools. All authors have given final approval to the manuscript.

How to Cite this Article

Dutheil F, Zaragoza-Civale L, Pereira B, et al. Prostate cancer and asbestos: A systematic review and meta-analysis. *Perm J* 2020;24:19.086. DOI: <https://doi.org/10.7812/TPP/19.086>

References

- Kang D-M, Kim J-E, Kim Y-K, Lee H-H, Kim S-Y. Occupational burden of asbestos-related diseases in Korea, 1998-2013: Asbestosis, mesothelioma, lung cancer, laryngeal cancer, and ovarian cancer. *J Korean Med Sci* 2018 Jul 19;33(35):e226. DOI: <https://doi.org/10.3346/jkms.2018.33.e226> PMID:30140191
- Reid A, Franklin P, Olsen N, et al. All-cause mortality and cancer incidence among adults exposed to blue asbestos during childhood. *Am J Ind Med* 2013 Feb;56(2):133-45. DOI: <https://doi.org/10.1002/ajim.22103> PMID:22886909
- Wu W-T, Lin Y-J, Shiue H-S, et al. Cancer incidence of Taiwanese shipbreaking workers who have been potentially exposed to asbestos. *Environ Res* 2014 Jul;132:370-8. DOI: <https://doi.org/10.1016/j.envres.2014.04.026> PMID:24837247
- Rozet F, Hennequin C, Beauval J-B, et al. [CCAFU French national guidelines 2016-2018 on prostate cancer]. [Article in French]. *Prog Urol* 2016 Nov;27(Suppl 1):S95-143. DOI: [https://doi.org/10.1016/S1166-7087\(16\)30705-9](https://doi.org/10.1016/S1166-7087(16)30705-9) PMID:27846936
- Bray F, Ferlay J, Soerjomataram I, Siegel RL, Torre LA, Jemal A. Global cancer statistics 2018: GLOBOCAN estimates of incidence and mortality worldwide for 36 cancers in 185 countries. *CA Cancer J Clin* 2018 Nov;68(6):394-424. DOI: <https://doi.org/10.3322/caac.21492> PMID:30207593
- Furuya S, Chimed-Ochir O, Takahashi K, David A, Takala J. Global asbestos disaster. *Int J Environ Res Public Health* 2018 May 16;15(5):E1000. DOI: <https://doi.org/10.3390/ijerph15051000> PMID:29772681
- Ollier M, Chamoux A, Naughton G, Pereira B, Dutheil F. Chest CT scan screening for lung cancer in asbestos occupational exposure: A systematic review and meta-analysis. *Chest* 2014 Jun;145(6):1339-46. DOI: <https://doi.org/10.1378/chest.13-2181> PMID:24480869
- Condie LW. Review of published studies of orally administered asbestos. *Environ Health Perspect* 1983 Nov;53:3-9. DOI: <https://doi.org/10.1289/ehp.83533> PMID:6363053
- Mi J, Peng W, Jia X, et al. [A case-control study on the relationship of crocidolite pollution in drinking water with the risk of gastrointestinal cancer in Dayao County]. [Article in Chinese]. *Wei Sheng Yan Jiu* 2015 Jan;44(1):28-32. PMID:25958631
- Kjaerheim K, Ulvestad B, Martinsen JI, Andersen A. Cancer of the gastrointestinal tract and exposure to asbestos in drinking water among lighthouse keepers (Norway). *Cancer Causes Control* 2005 Jun;16(5):593-8. DOI: <https://doi.org/10.1007/s10552-004-7844-1> PMID:15986115
- Band PR, Abanto Z, Bert J, et al. Prostate cancer risk and exposure to pesticides in British Columbia farmers. *Prostate* 2011 Feb 17;71(2):168-83. DOI: <https://doi.org/10.1002/pros.21232> PMID:20799287
- Koutros S, Beane Freeman LE, Lubin JH, et al. Risk of total and aggressive prostate cancer and pesticide use in the Agricultural Health Study. *Am J Epidemiol* 2013 Jan 1;177(1):59-74. DOI: <https://doi.org/10.1093/aje/kws225> PMID:23171882
- Multigner L, Ndong JR, Giusti A, et al. Chlordecone exposure and risk of prostate cancer. *J Clin Oncol* 2010 Jul 20;28(21):3457-62. DOI: <https://doi.org/10.1200/JCO.2009.27.2153> PMID:20566993
- Sun FV, Hu QF, Xia GW. [Roles of folate metabolism in prostate cancer]. [Article in Chinese]. *Zhonghua Nan Ke Xue* 2015 Jul;21(7):659-62. PMID:26333231
- Pike E, Wien TN, Wisløff T, Harboe I, Klemp M. Cancer risk with folic acid supplements [Internet]. Oslo, Norway: Knowledge Centre for the Health Services at The Norwegian Institute of Public Health (NIPH). Report form Norwegian Knowledge Centre for the Health Services (NOKC) No. 25-2011; 2011 Dec [cited 2019 Sep 11]. Available from: <http://www.ncbi.nlm.nih.gov/books/NBK464903>
- Panou V, Vyberg M, Meristoudis C, et al. Non-occupational exposure to asbestos is the main cause of malignant mesothelioma in women in North Jutland, Denmark. *Scand J Work Environ Health* 2019 Jan 1;45(1):82-9. DOI: <https://doi.org/10.5271/sjweh.3756> PMID:30025147
- Barbiero F, Zanin T, Pisa FE, et al. Mortality in a cohort of asbestos-exposed workers undergoing health surveillance. *Med Lav* 2018 Feb 6;109(2):83-6. DOI: <https://doi.org/10.23749/mdl.v109i2.5865> PMID:29701625
- Cheng Y-S, Holmes TD, Fan B. Evaluation of respirator filters for asbestos fibers. *J Occup Environ Hyg* 2006 Jan;3(1):26-35. DOI: <https://doi.org/10.1080/15459620500444046> PMID:16482975
- Frank AL, Joshi TK. The global spread of asbestos. *Ann Glob Health* 2014 Jul-Aug;80(4):257-62. DOI: <https://doi.org/10.1016/j.aogh.2014.09.016> PMID:25459326
- Stayner L, Welch LS, Lemen R. The worldwide pandemic of asbestos-related diseases. *Annu Rev Public Health* 2013;34(1):205-16. DOI: <https://doi.org/10.1146/annurev-publhealth-031811-124704> PMID:23297667
- LaDou J, Castleman B, Frank A, et al. The case for a global ban on asbestos. *Environ Health Perspect* 2010 Jul;118(7):897-901. DOI: <https://doi.org/10.1289/ehp.1002285> PMID:20601329
- da Costa BR, Cevallos M, Altman DG, Rutjes AWS, Egger M. Uses and misuses of the STROBE statement: Bibliographic study. *BMJ Open* 2011 Feb 26;1(1):e000048-000048. DOI: <https://doi.org/10.1136/bmjopen-2010-000048> PMID:22021739
- von Elm E, Altman DG, Egger M, Pocock SJ, Gøtzsche PC, Vandenbroucke JP; STROBE Initiative. The Strengthening of Reporting of Observational Studies in Epidemiology (STROBE) Statement: Guidelines for reporting observational studies. *Int J Surg* 2014 Dec;12(12):1495-9. DOI: <https://doi.org/10.1016/j.ijsu.2014.07.013> PMID:25046131
- Wells GA, Shea B, O'Connell D, et al. The Newcastle-Ottawa Scale (NOS) for assessing the quality of nonrandomised studies in meta-analyses [Internet]. Ottawa, Canada: The Ottawa Hospital Research Institute; 2014 [cited 2019 Dec 5]. Available from: www.ohri.ca/programs/clinical_epidemiology/oxford.asp
- Navel V, Mulliez A, Benoit d'Azy C, et al. Efficacy of treatments for Demodex blepharitis: A systematic review and meta-analysis. *Ocul Surf* 2019 Oct;17(4):655-69. DOI: <https://doi.org/10.1016/j.jtos.2019.06.004> PMID:31229586
- Lanthers C, Pereira B, Naughton G, Troussellard M, Lesage F-X, Dutheil F. Creatine supplementation and lower limb strength performance: A systematic review and meta-analyses. *Sports Med* 2015 Sep;45(9):1285-94. DOI: <https://doi.org/10.1007/s40279-015-0337-4> PMID:25946994
- Lanthers C, Pereira B, Naughton G, Troussellard M, Lesage F-X, Dutheil F. Creatine supplementation and upper limb strength performance: A systematic review and meta-

- analysis. *Sports Med* 2017 Jan;47(1):163-73. DOI: <https://doi.org/10.1007/s40279-016-0571-4> PMID:27328852
28. Benichou T, Pereira B, Mermillod M, et al. Heart rate variability in type 2 diabetes mellitus: A systematic review and meta-analysis. *Malik RA, ed. PLoS One* 2018 Apr 2;13(4):e0195166. DOI: <https://doi.org/10.1371/journal.pone.0195166> PMID:29608603
 29. Benoist d'Azy C, Pereira B, Chiambaretta F, Dutheil F. Oxidative and anti-oxidative stress markers in chronic glaucoma: A systematic review and meta-analysis. *PLoS One* 2016 Dec 1;11(12): e0166915. DOI: <https://doi.org/10.1371/journal.pone.0166915> PMID:27907028
 30. Benoist d'Azy C, Pereira B, Naughton G, Chiambaretta F, Dutheil F. Antibioophthalmitis in prevention of endophthalmitis in intravitreal injection: A systematic review and meta-analysis. *PLoS One* 2016 Jun 3;11(6):e0156431. DOI: <https://doi.org/10.1371/journal.pone.0156431> PMID:27257676
 31. Courtin R, Pereira B, Naughton G, et al. Prevalence of dry eye disease in visual display terminal workers: A systematic review and meta-analysis. *BMJ Open* 2016 Jan 14;6(1):e009675. DOI: <https://doi.org/10.1136/bmjopen-2015-009675> PMID:26769784
 32. DerSimonian R, Laird N. Meta-analysis in clinical trials. *Control Clin Trials* 1986 Sep;7(3):177-88. DOI: [https://doi.org/10.1016/0197-2456\(86\)90046-2](https://doi.org/10.1016/0197-2456(86)90046-2) PMID:3802833
 33. Chinn S. A simple method for converting an odds ratio to effect size for use in meta-analysis. *Stat Med* 2000 Nov 30;19(22):3127-31. DOI: [https://doi.org/10.1002/1097-0258\(20001130\)19:22<3127::AID-SIM784>3.0.CO;2-M](https://doi.org/10.1002/1097-0258(20001130)19:22<3127::AID-SIM784>3.0.CO;2-M) PMID:11113947
 34. Russo MW. How to review a meta-analysis. *Gastroenterol Hepatol (N Y)* 2007 Aug;3(8):637-42. PMID:21960873
 35. Howe HL, Wolfgang PE, Burnett WS, Nasca PC, Youngblood L. Cancer incidence following exposure to drinking water with asbestos leachate. *Public Health Rep* 1989; May-June;104(3):251-6. PMID:2498974
 36. Ilić M, Vlainjac H, Marinković J. Case-control study of risk factors for prostate cancer. *Br J Cancer* 1996 Nov;74(10):1682-6. DOI: <https://doi.org/10.1038/bjc.1996.610> PMID:8932356
 37. Korda RJ, Clements MS, Armstrong BK, et al. Risk of cancer associated with residential exposure to asbestos insulation: A whole-population cohort study. *Lancet Public Health* 2017 Nov;2(11):e522-8. DOI: [https://doi.org/10.1016/S2468-2667\(17\)30192-5](https://doi.org/10.1016/S2468-2667(17)30192-5) PMID:29253374
 38. Koskinen K, Pukkala E, Reijula K, Karjalainen A. Incidence of cancer among the participants of the Finnish Asbestos Screening Campaign. *Scand J Work Environ Health* 2003 Feb;29(1):64-70. DOI: <https://doi.org/10.5271/sjweh.706> PMID:12630438
 39. Pira E, Pelucchi C, Piolatto PG, Negri E, Bilei T, La Vecchia C. Mortality from cancer and other causes in the Balneario cohort of chrysotile asbestos miners. *Occup Environ Med* 2009 Dec;66(12):805-9. DOI: <https://doi.org/10.1136/oem.2008.044693> PMID:19643771
 40. Armstrong BK, de Klerk NH, Musk AW, Hobbs MS. Mortality in miners and millers of crocidolite in Western Australia. *Br J Ind Med* 1988 Jan;45(1):5-13. DOI: <https://doi.org/10.1136/oem.45.1.5> PMID:2829959
 41. Berry G, Newhouse ML, Wagner JC. Mortality from all cancers of asbestos factory workers in east London 1933-80. *Occup Environ Med* 2000 Nov;57(11):782-5. DOI: <https://doi.org/10.1136/oem.57.11.782> PMID:11024203
 42. Clemmesen J, Hjalgrim-Jensen S. Cancer incidence among 5686 asbestos-cement workers followed from 1943 through 1976. *Ecotoxicol Environ Saf* 1981 Mar;5(1):15-23. DOI: [https://doi.org/10.1016/0147-6513\(81\)90042-7](https://doi.org/10.1016/0147-6513(81)90042-7) PMID:7472252
 43. Enterline PE, Hartley J, Henderson V. Asbestos and cancer: A cohort followed up to death. *Br J Ind Med* 1987 Jun;44(6):396-401. DOI: <https://doi.org/10.1136/oem.44.6.396> PMID:3606968
 44. Franklin P, Reid A, Samuel L, Olsen N. Cancer incidence in individuals exposed to asbestos in childhood. *Respirology* 2012;17:12-41. DOI: <https://doi.org/10.1111/j.1440-1843.2012.02142.x>
 45. Hughes JM, Weill H, Hammad YY. Mortality of workers employed in two asbestos cement manufacturing plants. *Br J Ind Med* 1987 Mar;44(3):161-74. DOI: <https://doi.org/10.1136/oem.44.3.161> PMID:3828242
 46. Kovalevskiy EV, Schonfeld SJ, Feletto E, et al. Comparison of mortality in Asbest city and the Sverdlovsk region in the Russian Federation: 1997-2010. *Environ Health* 2016 Mar 1;15(1):42. DOI: <https://doi.org/10.1186/s12940-016-0125-0> PMID:26926835
 47. Krstev S, Stewart P, Rusiecki J, Blair A. Mortality among shipyard Coast Guard workers: A retrospective cohort study. *Occup Environ Med* 2007 Oct;64(10):651-8. DOI: <https://doi.org/10.1136/oem.2006.029652> PMID:17881470
 48. Meurman LO, Pukkala E, Hakama M. Incidence of cancer among anthophyllite asbestos miners in Finland. *Occup Environ Med* 1994 Jun;51(6):421-5. DOI: <https://doi.org/10.1136/oem.51.6.421> PMID:8044235
 49. Parent M-E, Richard M, Hugues OBA. Asbestos exposure and prostate cancer, really? *Occup Environ Med* 2019;76(Suppl 1):A71. DOI: <https://doi.org/10.1136/OEM-2019-EPI.190>
 50. Pesch B, Taeger D, Johnen G, et al. Cancer mortality in a surveillance cohort of German males formerly exposed to asbestos. *Int J Hyg Environ Health* 2010 Jan;213(1):44-51. DOI: <https://doi.org/10.1016/j.ijheh.2009.09.001> PMID:19783208
 51. Pira E, Pelucchi C, Piolatto PG, Negri E, Discalzi G, La Vecchia C. First and subsequent asbestos exposures in relation to mesothelioma and lung cancer mortality. *Br J Cancer* 2007 Nov 5;97(9):1300-4. DOI: <https://doi.org/10.1038/sj.bjc.6603998> PMID:17895892
 52. Puntoni R, Merlo F, Borsa L, Reggiardo G, Garrone E, Ceppi M. A historical cohort mortality study among shipyard workers in Genoa, Italy. *Am J Ind Med* 2001 Oct;40(4):363-70. DOI: <https://doi.org/10.1002/ajim.1110> PMID:11598985
 53. Puntoni R, Vercelli M, Merlo F, Valerio F, Santi L. Mortality among shipyard workers in Genoa, Italy. *Ann N Y Acad Sci* 1979;330(1 Health Hazard):353-77. DOI: <https://doi.org/10.1111/j.1749-6632.1979.tb18738.x> PMID:230774
 54. Raffin E, Lynge E, Juel K, Korstgaard B. Incidence of cancer and mortality among employees in the asbestos cement industry in Denmark. *Br J Ind Med* 1989 Feb;46(2):90-6. DOI: <https://doi.org/10.1136/oem.46.2.90> PMID:2923830
 55. Selikoff IJ, Hammond EC, Seidman H. Mortality experience of insulation workers in the United States and Canada, 1943-1976. *Ann N Y Acad Sci* 1979;330:91-116. DOI: <https://doi.org/10.1111/j.1749-6632.1979.tb18711.x> PMID:294225
 56. Sorahan TM. Cancer incidence in UK electricity generation and transmission workers, 1973-2015. *Occup Med (Lond)* 2019 Aug 22;69(5):342-51. DOI: <https://doi.org/10.1093/occmed/kqz082> PMID:31375830
 57. Szeszenia-Dabrowska N, Urszula W, Strzelecka A. Mortality study of workers compensated for asbestosis in Poland, 1970-1997. *Int J Occup Med Environ Health* 2002;15(3):267-78. PMID:12462454
 58. Tola S, Kalliomäki PL, Pukkala E, Asp S, Korkala ML. Incidence of cancer among welders, platers, machinists, and pipe fitters in shipyards and machine shops. *Br J Ind Med* 1988 Apr;45(4):209-18. DOI: <https://doi.org/10.1136/oem.45.4.209> PMID:3377996
 59. Tomioka K, Natori Y, Kumagai S, Kurumatani N. An updated historical cohort mortality study of workers exposed to asbestos in a refitting shipyard, 1947-2007. *Int Arch Occup Environ Health* 2011 Dec;84(8):959-67. DOI: <https://doi.org/10.1007/s00420-011-0655-2> PMID:21656122
 60. Tsai SP, Waddell LC, Gilstrap EL, Ransdell JD, Ross CE. Mortality among maintenance employees potentially exposed to asbestos in a refinery and petrochemical plant. *Am J Ind Med* 1996 Jan;29(1):89-98. DOI: [https://doi.org/10.1002/\(SICI\)1097-0274\(199601\)29:1<89::AID-AJIM11>3.0.CO;2-W](https://doi.org/10.1002/(SICI)1097-0274(199601)29:1<89::AID-AJIM11>3.0.CO;2-W) PMID:8808046
 61. Van den Borre L, Deboosere P. Enduring health effects of asbestos use in Belgian industries: A record-linked cohort study of cause-specific mortality (2001-2009). *BMJ Open* 2015 Jun 24;5(6):e007384. DOI: <https://doi.org/10.1136/bmjopen-2014-007384> PMID:26109114
 62. Wang X, Lin S, Yu I, Qiu H, Lan Y, Yano E. Cause-specific mortality in a Chinese chrysotile textile worker cohort. *Cancer Sci* 2013 Feb;104(2):245-9. DOI: <https://doi.org/10.1111/cas.12060> PMID:23121131
 63. Wilczyńska U, Szymczak W, Szeszenia-Dabrowska N. Mortality from malignant neoplasms among workers of an asbestos processing plant in Poland: Results of prolonged observation. *Int J Occup Med Environ Health* 2005;18(4):313-26. PMID:16617847
 64. Zhivin S, Laurier D, Caër-Lorho S, Acker A, Guseva Canu I. Impact of chemical exposure on cancer mortality in a French cohort of uranium processing workers. *Am J Ind Med* 2013 Nov;56(11):1262-71. DOI: <https://doi.org/10.1002/ajim.22231> PMID:24009194
 65. Pukkala E, Martinsen JI, Weiderpass E, et al. Cancer incidence among firefighters: 45 years of follow-up in five Nordic countries. *Occup Environ Med* 2014 Jun;71(6):398-404. DOI: <https://doi.org/10.1136/oem.2013.101803> PMID:24510539
 66. Catalona WJ, Smith DS, Ratliff TL, et al. Measurement of prostate-specific antigen in serum as a screening test for prostate cancer. *N Engl J Med* 1991 Apr 25;324(17):1156-61. DOI: <https://doi.org/10.1056/NEJM199104253241702> PMID:1707140
 67. Draisma G, Boer R, Otto SJ, et al. Lead times and overdiagnosis due to prostate-specific antigen screening: Estimates from the European Randomized Study of Screening for Prostate Cancer. *J Natl Cancer Inst* 2003 Jun 18;95(12):868-78. DOI: <https://doi.org/10.1093/jnci/95.12.868> PMID:12813170
 68. Cooperberg MR, Lubeck DP, Meng MV, Mehta SS, Carroll PR. The changing face of low-risk prostate cancer: Trends in clinical presentation and primary management. *J Clin Oncol* 2004 Jun 1;22(11):2141-9. DOI: <https://doi.org/10.1200/JCO.2004.10.062> PMID:15169800
 69. Heijndijk EA, Wever EM, Auvinen A, et al. Quality-of-life effects of prostate-specific antigen screening. *N Engl J Med* 2012 Aug 16;367(7):595-605. DOI: <https://doi.org/10.1056/NEJMoa1201637> PMID:22894572
 70. Amsrud Godtman R, Holmberg E, Lilja H, Stranne J, Hugosson J. Opportunistic testing versus organized prostate-specific antigen screening: Outcome after 18 years in the Göteborg randomized population-based prostate cancer screening trial. *Eur Urol* 2015 Sep;68(3):354-60. DOI: <https://doi.org/10.1016/j.eururo.2014.12.006> PMID:25556937

71. Schröder FH, Hugosson J, Roobol MJ, et al; ERSPEC Investigators. Screening and prostate cancer mortality: Results of the European Randomised Study of Screening for Prostate Cancer (ERSPC) at 13 years of follow-up. *Lancet* 2014 Dec 6;384(9959):2027-35. DOI: [https://doi.org/10.1016/S0140-6736\(14\)60525-0](https://doi.org/10.1016/S0140-6736(14)60525-0) PMID:25108889
72. Andriole GL, Crawford ED, Grubb RL 3rd, et al; PLCO Project Team. Prostate cancer screening in the randomized Prostate, Lung, Colorectal, and Ovarian Cancer Screening Trial: Mortality results after 13 years of follow-up. *J Natl Cancer Inst* 2012 Jan 18;104(2):125-32. DOI: <https://doi.org/10.1093/jnci/djr500> PMID:22228146
73. Bibbins-Domingo K, Grossman DC, Curry SJ. The US Preventive Services Task Force 2017 draft recommendation statement on screening for prostate cancer: An invitation to review and comment. *JAMA* 2017 May 16;317(19):1949-50. DOI: <https://doi.org/10.1001/jama.2017.4413> PMID:28397958
74. Wigle DT. Cancer mortality in relation to asbestos in municipal water supplies. *Arch Environ Health* 1977 Jul-Aug;32(4):185-90. DOI: <https://doi.org/10.1080/00039896.1977.10667278> PMID:889357
75. Harrington JM, Craun GF, Meigs JW, Landrigan PJ, Flannery JT, Woodhull RS. An investigation of the use of asbestos cement pipe for public water supply and the incidence of gastrointestinal cancer in Connecticut, 1935-1973. *Am J Epidemiol* 1978 Feb;107(2):96-103. DOI: <https://doi.org/10.1093/oxfordjournals.aje.a112523> PMID:623099
76. Millette JR, Craun GF, Stober JA, et al. Epidemiology study of the use of asbestos-cement pipe for the distribution of drinking water in Escambia County, Florida. *Environ Health Perspect* 1983 Nov;53:91-8. DOI: <https://doi.org/10.1289/ehp.835391> PMID:6559131
77. McCullagh SF. Is there a risk to health in using asbestos—Cement pipes for the carriage of drinking water? *Ann Occup Hyg* 1980;23(2):189-93. DOI: <https://doi.org/10.1093/annhyg/23.2.189> PMID:7436230
78. Fiorenzuolo G, Moroni V, Cerrone T, Bartolucci E, Rossetti S, Tarsi R. [Evaluation of the quality of drinking water in Senigallia (Italy), including the presence of asbestos fibres, and of morbidity and mortality due to gastrointestinal tumours]. [Article in Italian]. *Ig Sanita Pubbl* 2013 May-Jun;69(3):325-39. PMID:23903037
79. Levine DS. Does asbestos exposure cause gastrointestinal cancer? *Dig Dis Sci* 1985 Dec;30(12):1189-98. DOI: <https://doi.org/10.1007/BF01314055> PMID:3905307
80. Patel-Mandlik K, Millette J. Accumulation of ingested asbestos fibers in rat tissues over time. *Environ Health Perspect* 1983 Nov;53:197-200. DOI: <https://doi.org/10.1289/ehp.8353197> PMID:6662092
81. Donham KJ, Berg JW, Will LA, Leininger JR. The effects of long-term ingestion of asbestos on the colon of F344 rats. *Cancer* 1980 Mar 15;45(5 Suppl):1073-84. DOI: [https://doi.org/10.1002/1097-0142\(19800315\)45:5<1073::AID-CNCR2820451308>3.0.CO;2-W](https://doi.org/10.1002/1097-0142(19800315)45:5<1073::AID-CNCR2820451308>3.0.CO;2-W) PMID:6244076
82. Pascolo L, Gianoncelli A, Schneider G, et al. The interaction of asbestos and iron in lung tissue revealed by synchrotron-based scanning X-ray microscopy. *Sci Rep* 2013;3(1):1123. DOI: <https://doi.org/10.1038/srep01123> PMID:23350030
83. Huang SXL, Jaurand M-C, Kamp DW, Whysner J, Hei TK. Role of mutagenicity in asbestos fiber-induced carcinogenicity and other diseases. *J Toxicol Environ Health B Crit Rev* 2011;14(1-4):179-245. DOI: <https://doi.org/10.1080/10937404.2011.556051> PMID:21534089
84. Dostert C, Pétrilli V, Van Bruggen R, Steele C, Mossman BT, Tschopp J. Innate immune activation through Nalp3 inflammasome sensing of asbestos and silica. *Science* 2008 May 2;320(5876):674-7. DOI: <https://doi.org/10.1126/science.1156995> PMID:18403674
85. Comerpay S, Pastorino S, Tanji M, et al. Evaluation of clonal origin of malignant mesothelioma. *J Transl Med* 2014 Dec 4;12(1):301. DOI: <https://doi.org/10.1186/s12967-014-0301-3> PMID:25471750
86. Møller P, Danielsen PH, Jantzen K, Roursgaard M, Loft S. Oxidatively damaged DNA in animals exposed to particles. *Crit Rev Toxicol* 2013 Feb;43(2):96-118. DOI: <https://doi.org/10.3109/10408444.2012.756456> PMID:23346980
87. Kane AB. Mechanisms of mineral fibre carcinogenesis. *IARC Sci Publ* 1996;(140):11-34. PMID:9101315
88. Shukla A, Gulumian M, Hei TK, Kamp D, Rahman Q, Mossman BT. Multiple roles of oxidants in the pathogenesis of asbestos-induced diseases. *Free Radic Biol Med* 2003 May 1;34(9):1117-29. DOI: [https://doi.org/10.1016/S0891-5849\(03\)00060-1](https://doi.org/10.1016/S0891-5849(03)00060-1) PMID:12706492
89. Auerbach O, Conston AS, Garfinkel L, Parks VR, Kaslow HD, Hammond EC. Presence of asbestos bodies in organs other than the lung. *Chest* 1980 Feb;77(2):133-7. DOI: <https://doi.org/10.1378/chest.77.2.133> PMID:7353405
90. Misericocchi G, Sancini G, Mantegazza F, Chiappino G. Translocation pathways for inhaled asbestos fibers. *Environ Health* 2008 Jan 24;7(1):4. DOI: <https://doi.org/10.1186/1476-069X-7-4> PMID:18218073
91. Farioli A, Straif K, Brandi G, et al. Occupational exposure to asbestos and risk of cholangiocarcinoma: A population-based case-control study in four Nordic countries. *Occup Environ Med* 2018 Mar;75(3):191-8. DOI: <https://doi.org/10.1136/oemed-2017-104603> PMID:29133597
92. Felley-Bosco E, MacFarlane M. Asbestos: Modern Insights for Toxicology in the Era of Engineered Nanomaterials. *Chem Res Toxicol* 2018 Oct 15;31(10):994-1008. DOI: <https://doi.org/10.1021/acs.chemrestox.8b00146> PMID:30156102
93. An YS, Kim HD, Kim HC, Jeong KS, Ahn YS. The characteristics of asbestos-related disease claims made to the Korea Workers' Compensation and Welfare Service (KCOMWEL) from 2011 to 2015. *Ann Occup Environ Med* 2018 Jul 11;30(1):45. DOI: <https://doi.org/10.1186/s40557-018-0256-6> PMID:30009035
94. Lin R-T, Chang Y-Y, Wang J-D, Lee L-J-H. Upcoming epidemic of asbestos-related malignant pleural mesothelioma in Taiwan: A prediction of incidence in the next 30 years. *J Formos Med Assoc* 2019 Jan;118(1 Pt 3):463-70. DOI: <https://doi.org/10.1016/j.jfma.2018.07.013> PMID:30072200
95. Koike S. [Health effects of non-occupational exposure to asbestos]. [Article in Japanese]. *Sangyo Igaku* 1992 May;34(3):205-15. DOI: <https://doi.org/10.1539/joh1959.34.205> PMID:1619796
96. Carbone M, Baris YI, Bertino P, et al. Erionite exposure in North Dakota and Turkish villages with mesothelioma. *Proc Natl Acad Sci USA* 2011 Aug 16;108(33):13618-23. DOI: <https://doi.org/10.1073/pnas.1105887108> PMID:21788493
97. Baris YI, Grandjean P. Prospective study of mesothelioma mortality in Turkish villages with exposure to fibrous zeolite. *J Natl Cancer Inst* 2006 Mar 15;98(6):414-7. DOI: <https://doi.org/10.1093/jnci/dj1106> PMID:16537834
98. Mensi C, Riboldi L, De Matteis S, Bertazzi PA, Consonni D. Impact of an asbestos cement factory on mesothelioma incidence: Global assessment of effects of occupational, familial, and environmental exposure. *Environ Int* 2015 Jan;74:191-9. DOI: <https://doi.org/10.1016/j.envint.2014.10.016> PMID:25454236
99. Metintas S, Ak G, Metintas M. A review of the cohorts with environmental and occupational mineral fiber exposure. *Arch Environ Occup Health* 2019;74(1-2):76-84. DOI: <https://doi.org/10.1080/19338244.2018.1467873> PMID:29677456
100. D'Agostin F, de Micheli P, Negro C. Pleural mesothelioma in household members of asbestos-exposed workers in Friuli Venezia Giulia, Italy. *Int J Occup Med Environ Health* 2017 May 8;30(3):419-31. DOI: <https://doi.org/10.13075/ijomh.1896.00890> PMID:28481375
101. Drazer MW, Huo D, Eggen SE. National prostate cancer screening rates after the 2012 US Preventive Services Task Force recommendation discouraging prostate-specific antigen-based screening. *J Clin Oncol* 2015 Aug 1;33(22):2416-23. DOI: <https://doi.org/10.1200/JCO.2015.61.6532> PMID:26056181
102. Choi Y, Lim S, Paek D. Trades of dangers: A study of asbestos industry transfer cases in Asia. *Am J Ind Med* 2013 Mar;56(3):335-46. DOI: <https://doi.org/10.1002/ajim.22144> PMID:23192535
103. Subramanian V, Madhavan N. Asbestos problem in India. *Lung Cancer* 2005 Jul;49(Suppl 1):S9-12. DOI: <https://doi.org/10.1016/j.lungcan.2005.03.003> PMID:15950810
104. Le GV, Takahashi K, Park E-K, et al. Asbestos use and asbestos-related diseases in Asia: Past, present and future. *Respirology* 2011 Jul;16(5):767-75. DOI: <https://doi.org/10.1111/j.1440-1843.2011.01975.x> PMID:21449920
105. Gramond C, Rolland P, Lacourt A, et al; PNSM Study Group. Choice of rating method for assessing occupational asbestos exposure: Study for compensation purposes in France. *Am J Ind Med* 2012 May;55(5):440-9. DOI: <https://doi.org/10.1002/ajim.22008> PMID:22237902
106. Bernstein D, Dunnigan J, Hesterberg T, et al. Health risk of chrysotile revisited. *Crit Rev Toxicol* 2013 Feb;43(2):154-83. DOI: <https://doi.org/10.3109/10408444.2012.756454> PMID:23346982
107. Donaldson K, Murphy FA, Duffin R, Poland CA. Asbestos, carbon nanotubes and the pleural mesothelium: A review of the hypothesis regarding the role of long fibre retention in the parietal pleura, inflammation and mesothelioma. *Part Fibre Toxicol* 2010 Mar 22;7(1):5. DOI: <https://doi.org/10.1186/1743-8977-7-5> PMID:20307263
108. Fenoglio I, Aldieri E, Gazzano E, et al. Thickness of multiwalled carbon nanotubes affects their lung toxicity. *Chem Res Toxicol* 2012 Jan 13;25(1):74-82. DOI: <https://doi.org/10.1021/tx200255h> PMID:22128750
109. Fenoglio I, Fubini B, Ghibaudi EM, Turci F. Multiple aspects of the interaction of biomacromolecules with inorganic surfaces. *Adv Drug Deliv Rev* 2011 Oct;63(13):1186-209. DOI: <https://doi.org/10.1016/j.addr.2011.08.001> PMID:21871508
110. Huncharek M, Haddock KS, Reid R, Kupelnick B. Smoking as a risk factor for prostate cancer: A meta-analysis of 24 prospective cohort studies. *Am J Public Health* 2010 Apr;100(4):693-701. DOI: <https://doi.org/10.2105/AJPH.2008.150508> PMID:19608952
111. Rohrmann S, Linseisen J, Allen N, et al. Smoking and the risk of prostate cancer in the European Prospective Investigation into Cancer and Nutrition. *Br J Cancer* 2013 Feb 19;108(3):708-14. DOI: <https://doi.org/10.1038/bjc.2012.520> PMID:23169298
112. Ordóñez-Mena JM, Schöttker B, Mons U, et al; Consortium on Health and Ageing: Network of Cohorts in Europe and the United States (CHANCES). Quantification of the smoking-associated cancer risk with rate advancement periods: Meta-analysis of individual participant data from cohorts of the CHANCES consortium. *BMC Med* 2016 Apr 5;14(1):62. DOI: <https://doi.org/10.1186/s12916-016-0607-5> PMID:27044418
113. Bagnardi V, Rota M, Botteri E, et al. Alcohol consumption and site-specific cancer risk: A comprehensive dose-response meta-analysis. *Br J Cancer* 2015 Feb 3;112(3):580-93. DOI: <https://doi.org/10.1038/bjc.2014.579> PMID:25422909